



## Important dates

### All activities are open to the public

- ◆ Sept. 14: Alva Inc. general membership meeting, 7 p.m., Alva Community Center.
- ◆ Sept. 14: Rosh Hashanah, no school
- ◆ Lee County Commission meeting, 9:30 a.m., Courthouse, Fort Myers
- ◆ Sept. 23: First day of Autumn
- ◆ Oct. 3: Pet retreat morning, 9:30 a.m. House of Prayer Retreat Center, 17880 Cypress Creek Road

### Inside buzz

- ◆ Museum piece ..... Page 2
- ◆ Where to walk ..... Page 3

## Next county budget brings money for parks Alva's way

Lee County's next budget could bring about \$3.5 million for outdoor projects to Alva.

The money will go to build a park on Joel Boulevard, replace the Alva boat ramp dock, continue shoreline stabilization efforts in the Caloosahatchee Regional Park and purchase land to create a water conservation area by Fichter Creek.

County commissioners talked about the projects Sept. 1 during their budget workshop. They decided, among other



*Replacing the Alva boat ramp dock is a major maintenance project included in Lee County's budget for the 2015-16 year.*

things, to go ahead with each project.

The park on Joel will cost \$1.5 million  
**See Budget, page 2**

## Local government tax time starts this month

Public hearings on tax rates and public budgets that directly affect your lives begin in a matter of days. Budgets must be approved by Sept. 30

There hearings are your opportunity to speak directly to your elected officials about the services you receive from their agencies. About two weeks after these hearings another round will be held, followed by votes setting the property tax rate and the budgets that will be used from Oct. 1 through Sept. 30, 2016.

Here are the public hearings that cover Alva:

**Sept. 8:** Lee County School Board, 5:05 p.m. Lee County Public Education Center, 2855 Colonial Blvd, Fort Myers, FL 33966. Phone: 239-337-8215

**Sept. 9:** Lee County, 5:05 p.m. Lee County Commission Chambers, 2120 Main St, Fort Myers, FL 33901. Phone: 239-533-2221

**Sept. 10:** South Florida Water Management District, 5:15 p.m. SFWMD Auditorium B -1 Bldg, 3301 Gun Club Rd, West Palm Beach, FL 33406. Phone: 561-686-8800

**Sept. 10:** Lee County Mosquito Control/Hyacinth Commission, 5:01 p.m./5:15 p.m. 15191 Homestead Rd, Lehigh Acres, FL 33971. Phone: 239-694-2174

**Sept. 11:** West Coast Inland Navigation District, 5:01 p.m., Venice City Hall, 401 W Venice Ave, Venice, FL 34285. Phone: 941-485-9402

**Sept. 14:** Alva Fire District, 5:45 p.m. Station 1, 2660 Styles Road, Alva, FL 33920  
 Phone: 239-728-2223

### Newsletter Information

The Alva Inc. newsletter is published monthly.

Get the newsletter by email. Send your address to Alva Inc. President Ruby Daniels at:

[rubydaniels@embarqmail.com](mailto:rubydaniels@embarqmail.com)

Readers of the condensed printed version can read the full newsletter online at [Alvafl.org](http://Alvafl.org).

Send news and photos to editor Don Ruane at:

[ruanedon@aol.com](mailto:ruanedon@aol.com)

Join Alva Inc. by completing the membership form on [Alvafl.org](http://Alvafl.org).

Historic Alva



Images of Moss and Flora Farmer hang in the museum near trophy cases for the Alva School. Moss was principle of the school from 1956-

## Museum takes you back to good ol' school days

Children went back to The Alva School on Aug. 24, where principle Lynn Edward guides their elementary and middle school educations.

The Alva Museum and Library holds many memories of school days past, including the pictures of former principle Moss Farmer.

The museum is closed for the summer, but it is scheduled to reopen in October and remain open on Saturdays, from 2-4 p.m. through next May.

The museum is on Pearl Street across from the Alva United Methodist Church.

Budget \_\_\_\_\_

and be paid for with impact fees

The proposed budget includes \$300,000 each for the boat ramp and shoreline restoration. The county is seeking agrant for the ramp project. The shoreline project already is underway.

The Fichter Creek project is budgeted for \$1.4 million and requires land purchas-es to complete.

**-LIS-**

**Architecture**

**Engineering**

**Land Surveying**

Southwest Florida

Location:

21430 Palm Beach Blvd. Alva, FL  
33920

Tel: (239) 693-9244 Fax: (239) 693-9828

Central Florida

Location:

2572 West State Road 426 Suite  
2064

Oviedo, FL 32765

Tel. (321) 244-0402

Fax: (321) 244-9419

**Nancy B. Sizemore**

**Certified Public  
Accountant**

**3211 Tuckahoe  
Crossing LN  
PO Box 605  
Alva, FL 33920**

**Please support  
our  
advertisers**

Proudly serving North East Lee County for over 40 years

**West Coast  
Realty Inc.**

239-694-4500

Sandra Bates Face Painting®

(239) 634-9404  
[www.sandrabatesfacepaintingwebs.com](http://www.sandrabatesfacepaintingwebs.com)



sandra\_bates@hotmail.com  
Hablo Español

**JG JIM GREEN REALTY**

**Residential  
Commercial  
Creek Land  
239-728-5481**



**The Alva Museum**

Open every Saturday Oct—May  
2 pm. — 4 p.m.

Courtesy of the Alva Garden Club  
Meetings the third Tuesday of the month  
2 p. m. — 4 p. m.

Information: 239-728-3180 or 239-728-6543

Services Provided by

<b>Matthew Miller:</b> 239-872-0690	<b>M &amp; M Farms:</b> Organic Soil, plants and materials
<b>M &amp; M Horticulture:</b> debris removal	<b>DBI Limousine:</b> All occasions mild to wild
<b>Matthew Miller Tractors:</b>	<b>M&amp;M Dumpsters:</b> Commercial dumpsters
Tractors, Trailers	<b>Millers Lawn Service:</b> Lawns, Landscaping, ponds, waterfalls
<b>Com Ag Inc.:</b> Tree trimming, Excavating	



## Can animals teach us about God?

The House of Prayer Retreat Center is planning a two-hour celebration of our pets on Oct. 3.

The event starts at 9:30 a.m. and will explore what pets teach us about God.

There is no charge. Donations of cleaning supplies will be accepted and passed on to the Caloosa Humane Society in LaBelle.

The House of prayer Re-

treat Center is at 17880 Cypress Creek Road in Alva.

More information about the center can be found at:

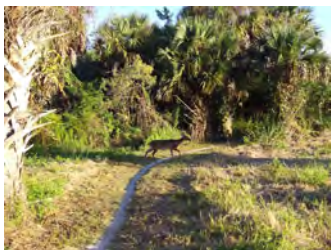
[www.hopretreatcenter.org](http://www.hopretreatcenter.org)

or by emailing:

[office.hopretreatcenter@gmail.com](mailto:office.hopretreatcenter@gmail.com)

## Autumn arrives Sept. 23; Get out and take a hike

Outdoorsy people can find plenty of parks and preserves to enjoy in the Alva area as the climate downshifts from broiling summer to a milder Fall. Here's a look at some of them:



### Caloosahatchee Regional Park

- 19130 North River Road
- 768 acres
- Leased from state
- Pine flatwoods, scrub oak, cypress swamp
- 20+ miles of trails
- Fishing pier

### Alva Community Park

Ball fields, tennis courts, playground and swings are here at 21471 North River Road.

### Charleston Park

Playgrounds by age group, basketball pavilion and multi-use field at 2541 Charleston



### Hickey Creek

- 17908 S.R. 80
- Gopher tortoise habitat
- 862 acres
- One mile creekfront
- Fishing pier
- Boat launch
- Picnic areas
- Trails

### Park Drive

### Olga Community Park

Playgrounds lighted tennis/ basketball court, picnic shelter and grill at 2325 South Olga Drive

### Alva Scrub Preserve

1,155 acres accessible from



### Manatee Park

- 10901 S.R. 80
- 17 acres
- Manatee viewing
- 100,000 visitors/year
- Education programs
- Interpretive talks
- ADA accessible

### Joel Boulevard.

### Bob Janes Preserve

5,620 acres accessible from Telegraph Creek Preserve off North River Road  
Telegraph Creek Preserve  
1,727 acres accessible from 16451 North River Road.

## Alva Inc. Board members

**Ruby Daniels (P), Emily Smith (T), Connie Dennis (S), Jim Green, Paul Furbay, William Redfern**



## Riverdale Learning Academy

Excellence in child care, welfare and education

License: C20E0055

14801 Palm Beach Blvd., Suite 200

Fort Myers FL 33905 .

Office: (239) 680-0104

Fax: (239) 694-0105

## HOUSE OF PRAYER RETREAT CENTER

**A sacred place to come home to self and to God**

Spiritual Direction \*  
Retreats Group  
Presentations

17880 Cypress Rd. Alva, FL. 33920

(239) 728-3614 \* FAX  
(239) 728-3760

Office.hopretreatcenter@gmail.com

Www.hopretreatcenter.org