

# ALVA

*A Living Vision of Alva*

December 2015

## Important dates

All activities are open to the public

- ◆ Dec. 6-14: Hannukkah
- ◆ Dec. 7: Pearl Harbor Day
- ◆ Dec. 14: Alva Inc. Christmas holidays pot luck for general membership, 7 p.m., Alva Community Center.
- ◆ Dec. 15: Winter concert, 6:30 p.m. The Alva School auditorium. Advanced band, Stomp, jazz ensemble
- ◆ Dec. 17: Winter concert, 6:30 p.m. The Alva School auditorium. Beginning band, guitars
- ◆ Dec. 21-Jan.1: No school
- ◆ Dec. 25: Christmas Day

## Inside buzz

- ◆ Know who to call ..... Page 2
- ◆ High school planning ..... Page 3
- ◆ Help for first responders ... Page 3

## Newsletter Information

The free Alva Inc. newsletter is published monthly and distributed by email and at: [Alvafi.org](http://Alvafi.org).

A condensed version is available at local businesses. .

To subscribe, send your email address to President Ruby Daniels at:

[rubydaniels@embargmail.com](mailto:rubydaniels@embargmail.com)

Send news and photos to editor Don Ruane at: [ruanedon@aol.com](mailto:ruanedon@aol.com)

Join Alva Inc. at: [Alvafi.org](http://Alvafi.org).

# Merry Christmas

*(From: Alva Inc.)*

# Happy New Year

## Night life for Alva could be in the future for empty building next to the river

Imagine going down to the river for an evening of talk with friends and a little music.

While you're enjoying a sandwich and drink a large boat might pass through the Broadway drawbridge or an alligator could slowly make its way across the water in the last light of a glorious sunset.

That's one scenario.

Another is a sports bar with loud music disrupting the neighborhood around the Alva Post Office.

The green building that houses the Riteway Insurance Repair Service is up for sale.

Listing agent Emanuele DiMare of Cape Coral says the parking issues long associated with the site can be resolved



**A passing work boat caught their eye of visitors to the building.**

and the building could become Alva's night life hot spot.

Owner Tino Chaviano said he'd like to see a young

**Realtors and others gathered in November to look at the property proposed as a good place for a night spot .**

couple rent the building and offer sandwiches and boating supplies.

Alva Inc. president Ruby Daniels said the property's use should respect Alva's quiet, rural nature.

Stop holiday emergencies; Know who to call

## COMMUNITY CONTACTS

### FIRE/RESCUE/LAW ENFORCEMENT

9-1-1 EMERGENCIES

1-800-222-1222 Poison Control

### NON-EMERGENCY

728-2223 Alva Fire District

543-3443 Bayshore Fire District

694-2833 Fort Myers Shores Fire District

303-5300 Lehigh Acres Fire District

477-1000 Sheriff's Office



## ALVA: Facts and FAQ's

### What is ALVA Inc.?

ALVA, Inc. is a local civic organization whose mission is to preserve and protect the unique historical, rural, agricultural and equestrian ambiance of Alva,

### What is the purpose of ALVA Inc.?

The purpose of ALVA, Inc. is to provide a forum for community planning in consonance with the mission statement. ALVA, Inc. strives to become aware of development, zoning, and other proposals and plans that will impact the area, bring about community awareness, and work toward constructive solutions.

### Is ALVA concerned only about development?

No. ALVA Inc. is interested in many activities and issues that affect our community.

### How can I join ALVA?

Membership is open to all Alva residents, property owners, or businesses that are interested in the future of our area. Please print a membership form from [Alvafl.org](http://Alvafl.org), complete and mail it with your dues to Alva Inc., P. O. Box 2022, Alva FL

### Historic Alva

*Tools from the barns and work areas of earlier residents can be explored in the Alva Museum, 21420 E. Pearl St.*

*The museum is open 2-4 p.m. each Saturday from October through May. The quaint building was Lee County's first public library.*



*Today it houses artifacts and memorabilia related to Alva and life in Southwest Florida.*

**Alva Inc.**  
**Board members**  
Ruby Daniels (P)  
Emily Smith (T)  
Connie Dennis (S)  
Jim Green  
Paul Furbay  
William Redfern



**A sacred place  
to come home to self  
and to God**

Spiritual Direction

Retreats

Group Presentations

17880 Cypress Rd. Alva, FL.  
33920

(239) 728-3614 \* FAX (239)  
728-3760

Office.hopretreatcenter@gmail.com

Www.hopretreatcenter.org

Sandra Bates • Face Painting®  
(239) 634-9404  
[www.sandrabatesfacepaintingwebs.com](http://www.sandrabatesfacepaintingwebs.com)  
sandra\_bates@hotmail.com  
Hablo Español

NANCY B. SIZEMORE  
CERTIFIED PUBLIC ACCOUNTANT  
PO BOX 605  
ALVA, FL 33920  
PHONE 239-560-2953  
FAX 888-514-2315  
NBSCPA@CENTURYLINK.NET

**Riverdale Learning Academy**  
Excellence in child care, welfare and education  
License: C20E0055  
14801 Palm Beach Blvd., Suite 200, Fort Myers FL 33905  
Office: (239) 680-0104 Fax: (239) 694-0105

## Auditorium ready to rock with holiday music

The first public event scheduled for the rebuilt auditorium at The Alva School is a two-part winter concert.

The advanced band, Stomp group and jazz ensemble are scheduled to play on Dec. 15. The beginners band and guitarists are to perform on Dec. 17.

Both concerts begin at 6:30 p.m.

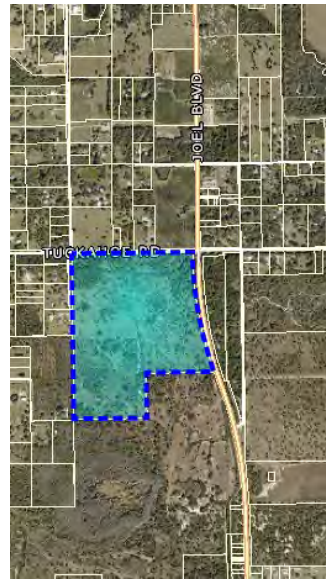
The auditorium was rebuilt last summer after cracked rafters and weakened walls forced the school



**The former Alva High School, then Alva Middle School is now part of the consolidated The Alva School for grades K-8.**

to close it for much of the 2014-15 school year.

Rafters and walls were replaced with more durable materials.



**Proposed site for a high school**

## Informal chat set on plans for East Zone high school

Casual conversation on locating Lee County's next high school in Alva will be part of Alva Inc.'s public meeting at 7 p.m. Dec. 14.

The meeting coincides with Alva Inc.'s holiday potluck dinner at the Alva Community Center.

The school district plans to add a high school in the East Zone after it builds one in Bonita Springs. The district has land at Tuckahoe Road and Joel Boulevard.



**The Alva School celebrated favorite storybook characters in November. Students and staff dressed the part. This group adapted its theme from Disney's "101 Dalmatians."**

## Trio organizes not-for-profit group to honor heroes

[www.facebook.com/SWFLHEROESFOUNDATION](http://www.facebook.com/SWFLHEROESFOUNDATION)

A nonprofit to help military, firefighters, police and EMS workers in need has been formed by Alva resident Michael Thompson and Jeff Tumarello and Mark Smith.

The organization is named the S.W. Florida Heroes Foundation Inc.

"We do a lot of charity work already. We really enjoy helping people," Thompson said.

Information about the foundation is available on GoFundMe.com. A website [SWFLheroesfoundation.org](http://SWFLheroesfoundation.org) should be open soon with more details.



## The Alva Museum

Open every Saturday Oct—May  
2 pm. — 4 p.m.

Courtesy of the Alva Garden Club

Meetings the third Tuesday of the month

Information: 239-728-3180 or 239-728-6543

Proudly serving North East Lee County for over 40 years



239-694-4500



**Residential-Commercial  
Creek Land  
239-728-5481**

## LIS

Architecture, Engineering,  
Land Surveying

21430 Palm Beach Blvd.

Alva, FL 33920

Tel: (239) 693-9244

Fax: (239) 693- 9828

Central Florida Location:

2572 West State Road 426

Suite 2064

Oviedo, FL 32765

Tel. (321) 244-0402

Fax: (321) 244-9419

Services Provided by

**Matthew Miller:** 239-872-0690

**M &M Horticulture:** debris re-  
moval

**Matthew Miller Tractors:**

Tractors, Trailers

**Com Ag Inc.:** Tree trimming,  
Excavating

**M & M Farms:** Organic Soil,  
plants and materials

**DBI Limousine:** All occasions mild  
to wild

**M&M Dumpsters:** Commercial  
dumpsters

**Millers Lawn Service:** Lawns, Land-  
scaping, ponds, waterfalls